

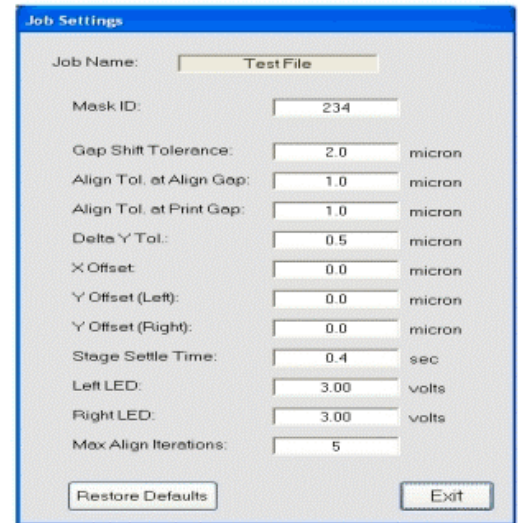


NEUTRONIX / QUINTEL

685A Jarvis Drive, Morgan Hill, CA 95037 Ph: (408)776-5190 Fax: (408)776-1039

NEUVISION 2

**It Takes NeuVision 2
To Make A Great Machine Perform Better**



Easy to learn and use graphical menuing offers a robust selection of operating parameters.

High Resolution LCD 15" monitor displays sharp wafer and mask images.

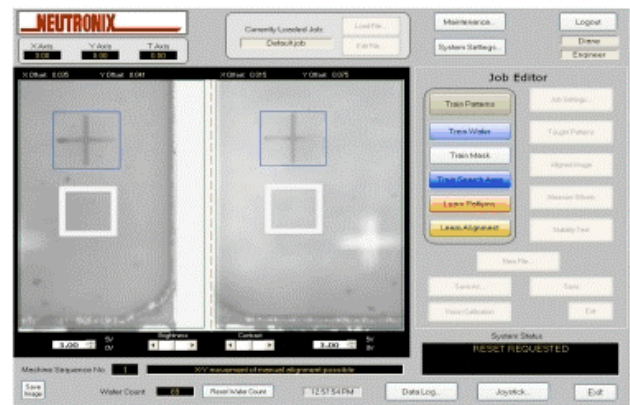
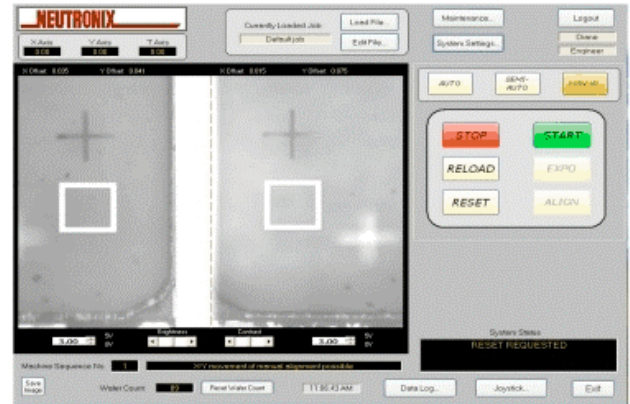
Compact and ergonomic joystick unit permits users to control system without keyboard.

Fiber Optic or LED Illumination

High Resolution and high speed camera with precision optical couplers allows a choice in magnification of .55x=500um x 800 field of view per side of 1.0x=300 x 450um with 60um and 40um depth of focus respectively.



Compact tower includes media storage for easy job transfers.



Backed by two decades of experience, Neutronix has become a widely respected remanufacturer of photolithography equipment, specializing in Canon PLA and MPA mask aligners. Custom reengineering and servicing this equipment has given us the knowledge and expertise needed to design and manufacture original equipment that allows our customers to cost-effectively upgrade their PLAs with current level technology.

A New Way To Look At Mask Alignment

NeuVision² is the first of a new generation of computerized mask alignment systems. A joystick-operated, graphical interface guides the user step-by-step through the process of custom configuring the specifications for automatic alignment. Viewing the alignment process through NeuVision²'s eye-level monitor with its crisp display eliminates eye strain as well as neck and back discomfort.

Engineering For Optimum Performance

NeuVision² combines our wealth of PLA Experience with user-friendly software to create an alignment system that easily adapts to a broad range of application challenges.

With NeuVision² installed on your PLAs, you can:

- Automatically align on irregular wafer surfaces such as metal layers or other noisy or low return thin films.
- Define your own alignment marks. Significantly increase the capture area and potentially eliminating the cost of retooling masks.
- Program alignment tolerances to match production goals. Extremely tight alignment, 1 um, can be achieved reliably, or throughput can be increased by relaxing tolerance specifications.
- Fast alignments with alignment of 515 seconds.

www.acrosemi.com



Contact Information:

USA - Phone: (714) 468-9034 Fax: (866) 212-8857

E-mail: info@acrosemi.com

Vietnam - Phone: (+84-0) 91-225-7173

Email Ho Chi Minh Office: hcmc@acrosemi.com

Email Ha Noi Office: hanoi@acrosemi.com