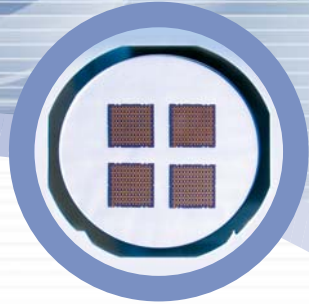
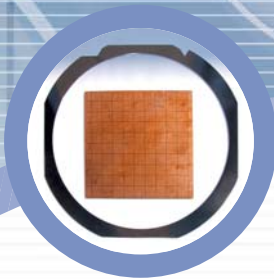


WM-966



Workpiece Mounting Unit - Model 966

The ADT Workpiece Mounting Unit-Model 966 enables mounting of wafers/substrates to frames, using various kinds of tape. The system is offered in 6"/8" and 8"/12" configurations.

With smart, state-of-the-art features such as: a built-in, automatic reeling and removal of UV tape protective backing, ESD (Electrostatic Discharge) protection and many other advanced customization and control options, the system exhibits the highest level of design and performance available.

System Highlights:

- Uniform mounting and tensioning without forming air bubbles
- Built-in reeling and removal of UV tape backing
- Compatibility with all film frames
- Programmable temperature regulation
- built-in circular blade cuts leftover tape
- Optional ESD protection
- Optional non-contact mounting

Uniform Mounting And Tensioning



12" Model

8" Model

ADT = **Dicing**
Advanced Dicing Technologies

WM-966



Standard Features

- Handles as standard 6" and 8" workpiece frames, or 8" and 12" workpiece frames (per customer specifications)
- Compatible with regular tape or UV tape
- Built-in controller regulates the temperature (up to 70° C) for consistent performance
- Automatic reeling and removal of UV tape protective backing
- Alignment pins enable precise orientation of frames
- Magnets hold and secure the frame during mounting
- Vacuum pressure holds the workpiece steady
- Engraved markings on the chuck aid in centering and aligning workpieces
- Circular blade cuts the leftover tape from the workpiece after mounting



Circular blade cuts leftover tape

WM-966 Special (Optional) Features

- ESD (Electrostatic Discharge) protection eliminates static electricity build-up
- 4" & 5" frame handling
- Chuck customization for multi-panel applications
- Non-contact mounting
- Plastic frame handling



Automatic reeling and removal of UV tape backing

Specifications

	Model 966-6", 8"	Model 966-8", 12"
Dimensions	12" H x 15.5" W x 31.5" D	13" H x 22" W x 39.5" D
Weight	99.2 lbs. (45 kg)	132.3 lbs. (60 kg)
Line voltage	100-120 V AC, 60 Hz, single phase	or 220-240 V AC, 50 Hz single phase
Air pressure	80 PSI	80 PSI
Air consumption	120 L/min	120 L/min



Programmable temperature regulation

Uniform Mounting And Tensioning



Headquarters
Advanced Dicing Technologies Ltd.
Advanced Technology Center, Haifa 31905
Israel
Tel: 972-4-8545222
Fax: 972-4-8550001
Email: sales@adt-co.com
www.adt-dicing.com

USA Subsidiary
Advanced Dicing Technologies Inc.
1155 Business Center Drive, Horsham, PA 19044
USA
Toll free: 800-604-4950
Tel: 215-773-9155
Fax: 215-773-9844
Email: us-support@adt-co.com



China RO
Zhangjiang Semiconductor Industry
Park, building no. 7, room no. 107
3000 Longdong Ave., Shanghai 201203
China
Tel: 8621-6879-0858
Fax: 8621-6879-0868
Email: china_support@adt-co.com